

CONTRARY CREATURES

ACTIVITY KIT

Some creatures soar high up in the sky, and others swim down in the deep ocean. Some creatures blend in to their surroundings, and others like to stand out. Some creatures are big, and others are very, very small.

Debut picture book creator James Weinberg's vibrant, silk-screen style art showcases the curious, colorful, and contrary creatures that make up one truly wild animal kingdom!

Contrary Creatures is a great way to practice early literacy skills, with vocabulary words like "climate," "environment," and "contrast," while talking about opposites, likes and dislikes, and how our differences make us unique.

ACTIVITIES

HOT OR COLD?

Contrary creatures often live in environments with contrary climates. Have the kids draw a creature to live in the cold environment on the left, and a creature to live in the hot environment on the right. For younger children, consider brainstorming some ideas first as a group, and then ask the kids to draw their favorite.

HOUSE SWAP

Can you imagine if a butterfly lived in a fish bowl, or if a goldfish lived on a tree branch? In this laugh-out-loud activity, ask the kids to imagine what it would be like if these creatures swapped homes before drawing a line between the correct pairing.

CREATURE FEATURE

Humans are just as varied and unique as the creature in this book. Everyone has likes, dislikes, and their very own special creature features and skills. Have the kids fill out their own Creature Feature Card, listing their favorite food, climate, and fun creature facts, complete with their own drawing. Encourage the kids to be as literal or creative with their creatures as they like!



HOT OR COLD?

Brrr! This environment is covered in snow and ice. Can you draw an animal that lives where it's cold?

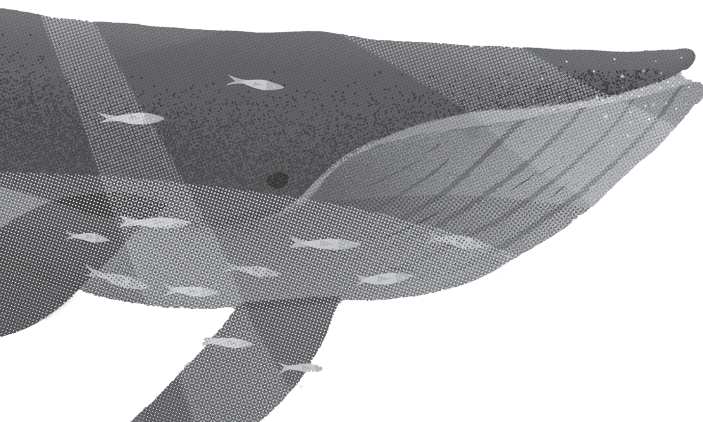
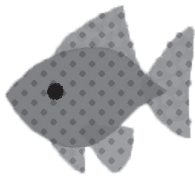
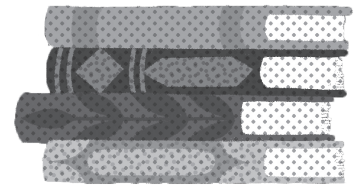
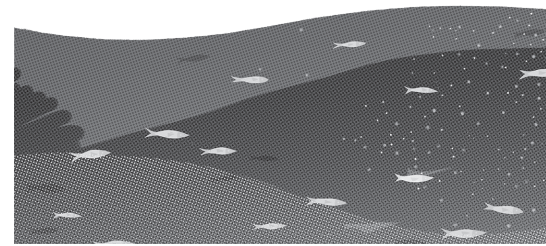
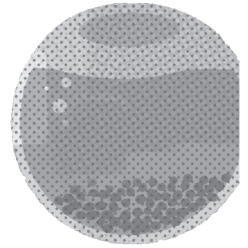


Phew! This environment is covered in cactus trees and sand. Can you draw an animal that lives where it's hot?



HOUSE SWAP

Oh no! These contrary creatures have lost their way. Can you help them find their way home? Draw a line from the creature on the left to its home on the right.



CREATURE FEATURE

If you could be any creature, with any feature, what would you be?
You can pick a real animal or make up your own!

Creature Name _____

Environment _____

Favorite Food _____

Fun Fact _____

